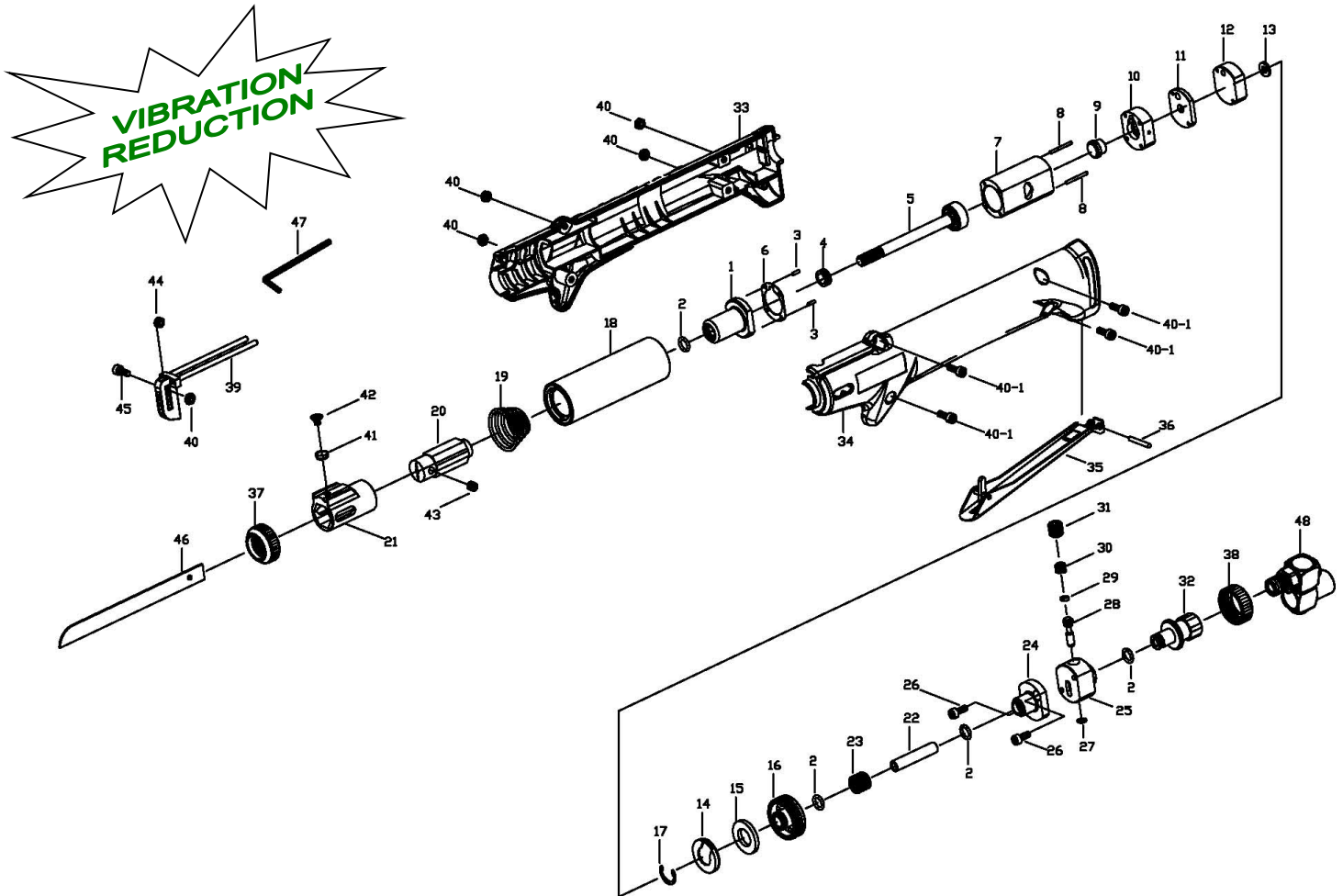


# ZS329H Vibration Reduction Air Saw

U.S. PAT. NO. 6,149,356  
VIBRATION REDUCTION



# ZS329H Vibration Reduction Air Saw

U.S. PAT. NO. 6,149,356  
VIBRATION REDUCTION

## TECHNICAL DATA

Cutting Capacity-Thickness(Gauge)	: Steel 2.91 mm (9)
	: Alum. 3.26 mm(8)
Operating Air Pressure (Maximum)	: 6.2 Kg/Cm <sup>2</sup> ( 90PSI )
Strokes Per Minute @90psi	: 5,000
Stroke Length	: 25 mm
Avg. Air Consumption	: <b>2.8 CFM</b>
Air Inlet (NPTF)	: 1/4"
Min. Hose Size	: 10 mm - 3/8 inch
Net Weight	: 0.76 kgs (1.68lb)
Overall Length	: 263 mm
Sound Pressure	: < 85 dBA
Vibration	: <b>4.3 m/s<sup>2</sup></b>
Standard Accessories Include	: 1 pc of 3mmHex Wrench
	: 1 each of 18T,24T Saw Blade

## PARTS LIST

Index	Part #	Description	Index	Part#	Description	Index	Part#	Description
1.	314403	Cylinder Head Ass'y	18.	317419	Main Liner	35.	329601	Safety Lever Ass'y
2.	OR0812	O-Ring (4)	19.	329607	Shock Absorbent Spring	36.	RP3022	Rear Dowel Pin
3.	RP2006	Front Dowel Pin (2)	20.	316407C	Blade Holder Ass'y	37.	318705	Lock Nut-Front
4.	<b>314418</b>	Bumper	21.	329102	Sliding Liner	38.	318707	Lock Nut-Rear
5.	317402	Piston Ass'y	22.	319202	Connecting Hose	39.	315700S	Saw Blade Guide
6.	314405	Gasket	23.	329608	Spring	40.	NN0407B	Nut (5)
7.	317401	Cylinder	24.	319203	Lid-Valve	40-1.	040710	Screw (4)
8.	RP2020	Rear Dowel Pin (2)	25.	319204	Valve Case	41.	315104	Spacer
9.	314302	Automatic Valve	26.	040712	Screw (2)	42.	040706M	Screw
10.	314311	Valve Chest	27.	OR0507	O-Ring	43.	061006	Set Screw
11.	314303	Valve Seat	28.	314602	Valve Stem	44.	315707	Guide Wheel
12.	315304	Valve Cap	29.	OR0307	O-Ring	45.	040713	Screw
13.	318203	Rubber Washer	30.	318603	Spring	46.	317918Z-1	18T Saw Blade
14.	318704	Muffler Cap	31.	182808	Plug Screw		317924Z-1	24T Saw Blade
15.	301709	Muffler	32.	319708	Air Inlet	47.	314933	3mm Hex Wrench
16.	318211	Adaptor	33.	329723R-A	Right Outer Housing	48.	922A19	1/4"NPT Universal Swivel
17.	EC1317	Retaining Ring	34.	329723L-A	Left Outer Housing			Air Inlet Joint (opt.)