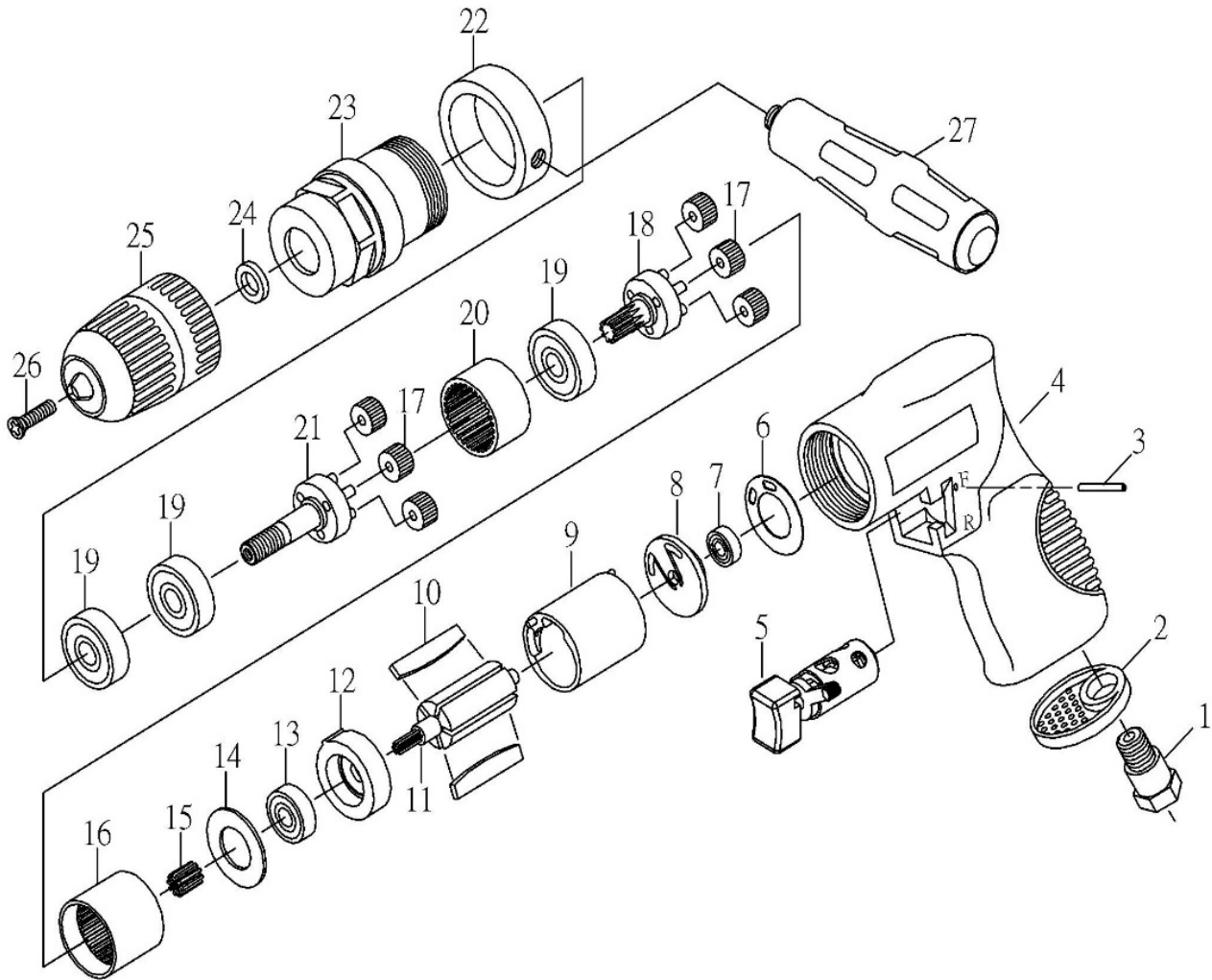


ZRD327D 1/2" Air Reversible Drill



ZRD327D 1/2" Air Reversible Drill

TECHNICAL

DATA

Chuck Size : 1/2(13) inch(mm)
 Spindle Thread : 3/8 " -24
 Net Weight : 2.6(1.2) lbs(kgs)
 Length : 9(230) in.(mm)

Free Speed : 700 RPM
 Air Inlet Size : 1/4 inch-NPT/PT
 Min. Hose Size : 3/8(10) inch(mm)
 Avg. Air Cons. : 4 cfm

PARTS LIST

Index	Part #	Description	Q'ty	Index	Part #	Description	Q'ty
1	ZRD327D-01	AIR INLET	1	15	ZRD327D-15	GEAR	1
2	ZRD327D-02	EXHAUST SLEEVE	1	16	ZRD327D-16	GEAR LINK	1
3	ZRD327D-03	PIN	1	17	ZRD327D-17	GEAR	6
4	ZRD327D-04	HOUSING SET	1	18	ZRD327D-18	GEAR PLATE	1
5	ZRD327D-05	REVERSE LEVER SET	1	19	ZRD327D-19	BEARING	3
6	ZRD327D-06	PACKING	1	20	ZRD327D-20	GEAR LINK	1
7	ZRD327D-07	BEARING	1	21	ZRD327D-21	SHAFT	1
8	ZRD327D-08	REAR PLATE	1	22	ZRD327D-22	HANDLE LINK	1
9	ZRD327D-09	CYLINDER SET	1	23	ZRD327D-23	CLAMP NUT	1
10	ZRD327D-10	ROTOR BLADE	5	24	ZRD327D-24	WASHER	1
11	ZRD327D-11	ROTOR	1	25	ZRD327D-25	1/2" KEYLESS CHUCK	1
12	ZRD327D-12	FRONT PLATE	1	26	ZRD327D-26	CHUCK SCREW	1
13	ZRD327D-13	BEARING	1	27	ZRD327D-27	HANDLE	1
14	ZRD327D-14	WASHER	1				