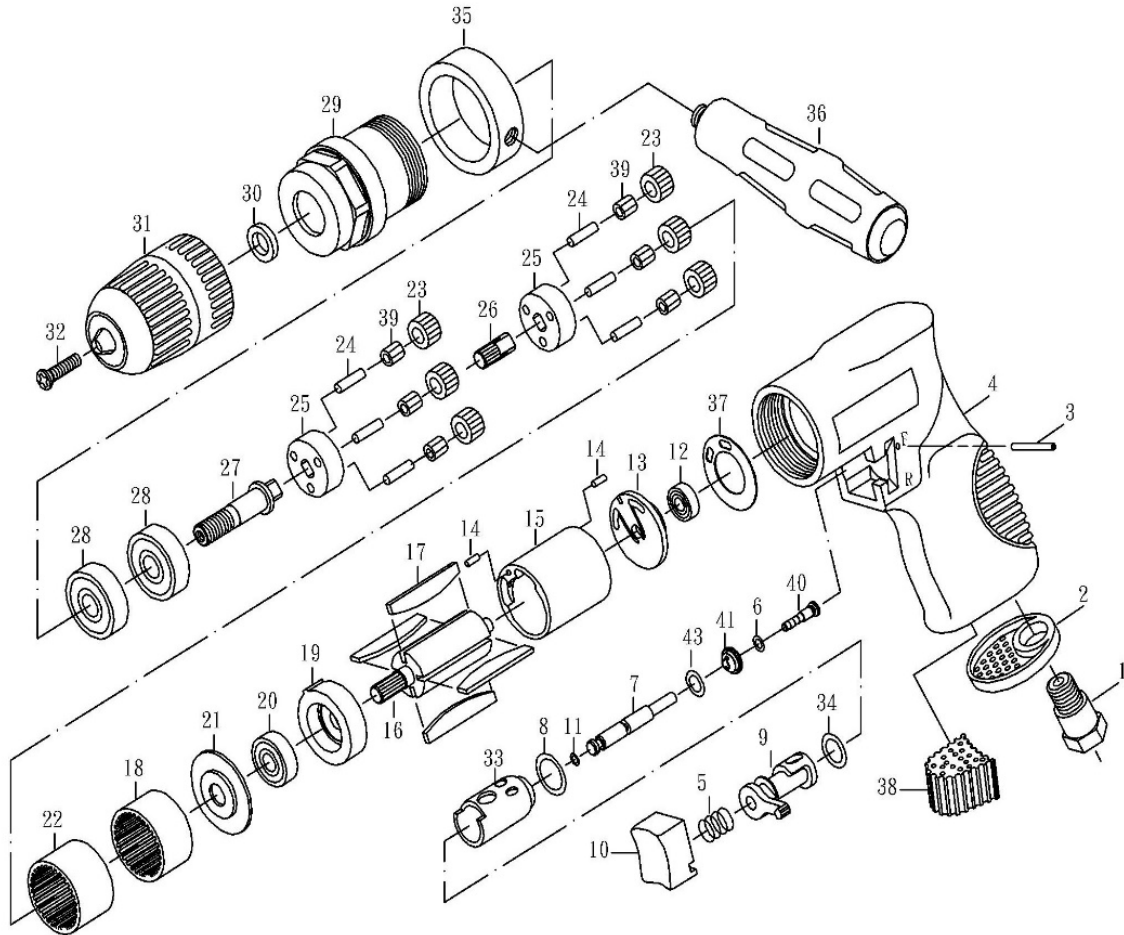


ZRD325D 1/2" Air Reversible Drill (Feathering Control)



ZRD325D 1/2" Air Reversible Drill (Feathering Control)

TECHNICAL DATA

Chuck Size: 1/2(13) inch(mm)
 Spindle Thread: 3/8 " -24
 Net Weight : 2.6(1.2) lbs(kgs)
 Length: 9(230) in.(mm)

Free Speed : 450 RPM
 Air Inlet Size : 1/4 inch-NPT/PT
 Min. Hose Size : 3/8(10) inch(mm)
 Avg. Air Cons. : 4 cfm

PARTS LIST

| Index | Part # | Description | Q'ty | Index | Part # | Description | Q'ty |
|-------|------------|----------------|------|-------|------------|--------------------|------|
| 1 | ZRD325D-01 | AIR INLET | 1 | 22 | ZRD325D-22 | GEAR LINK | 1 |
| 2 | ZRD325D-02 | EXHAUST SLEEVE | 1 | 23 | ZRD325D-23 | IDLER GEAR | 6 |
| 3 | ZRD325D-03 | PIN | 1 | 24 | ZRD325D-24 | PIN | 6 |
| 4 | ZRD325D-04 | HOUSING | 1 | 25 | ZRD325D-25 | GEAR PLATE | 2 |
| 5 | ZRD325D-05 | SPRING | 1 | 26 | ZRD325D-26 | GEAR SHAFT | 1 |
| 6 | ZRD325D-06 | O-RING | 1 | 27 | ZRD325D-27 | SHAFT | 1 |
| 7 | ZRD325D-07 | VALVE STEM | 1 | 28 | ZRD325D-28 | BEARING | 2 |
| 8 | ZRD325D-08 | O-RING | 1 | 29 | ZRD325D-29 | CLAMP NUT | 1 |
| 9 | ZRD325D-09 | REVERSE LEVER | 1 | 30 | ZRD325D-30 | WASHER | 1 |
| 10 | ZRD325D-10 | TRIGGER | 1 | 31 | ZRD325D-31 | 1/2" KEYLESS CHUCK | 1 |
| 11 | ZRD325D-11 | O-RING | 1 | 32 | ZRD325D-32 | CHUCK SCREW | 1 |
| 12 | ZRD325D-12 | BEARING | 1 | 33 | ZRD325D-33 | BUSHING | 1 |
| 13 | ZRD325D-13 | REAR PLATE | 1 | 34 | ZRD325D-34 | O-RING | 1 |
| 14 | ZRD325D-14 | PIN | 2 | 35 | ZRD325D-35 | HANDLE LINK | 1 |
| 15 | ZRD325D-15 | CYLINDER | 1 | 36 | ZRD325D-36 | HANDGRIP | 1 |
| 16 | ZRD325D-16 | ROTOR | 1 | 37 | ZRD325D-37 | PACKING | 1 |
| 17 | ZRD325D-17 | ROTOR BLADE | 4 | 38 | ZRD325D-38 | MUFFLER | 1 |
| 18 | ZRD325D-18 | GEAR LINK | 1 | 39 | ZRD325D-39 | NEEDLE BEARING | 6 |
| 19 | ZRD325D-19 | FRONT PLATE | 1 | 40 | ZRD325D-40 | VALVE STEM | 1 |
| 20 | ZRD325D-20 | BEARING | 1 | 41 | ZRD325D-41 | VALVE STEM BUSHING | 1 |
| 21 | ZRD325D-21 | WASHER | 1 | 43 | ZRD325D-43 | O-RING | 1 |