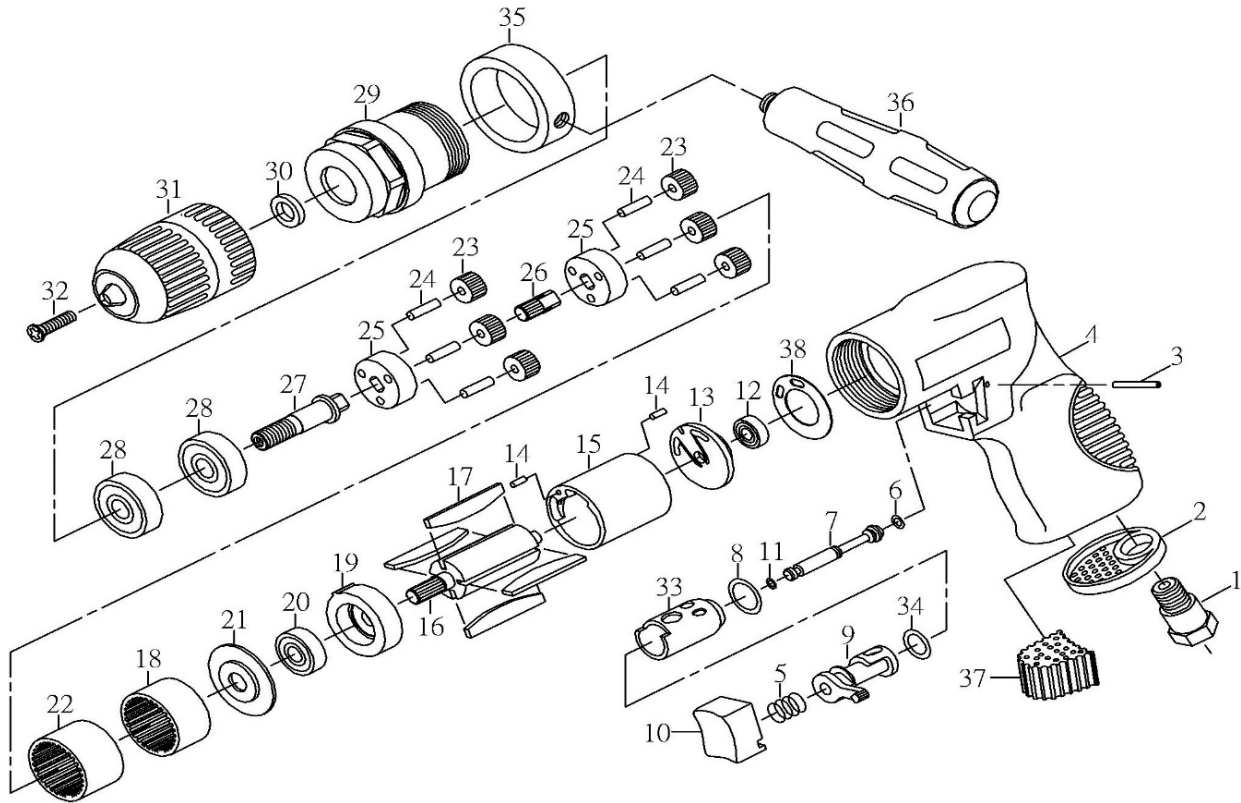


# ZRD325 1/2" Air Reversible Drill



## ZRD325 1/2" Air Reversible Drill

### TECHNICAL

Chuck Size: 1/2(13) inch(mm)  
 Spindle Thread: 3/8"-24  
 Net Weight: 2.6(1.2) lbs(kgs)  
 Length: 9(230) in.(mm)

Free Speed: 450 rpm  
 Air Inlet Size: 1/4 inch-NPT/PT  
 Min. Hose Size: 3/8(10) inch(mm)  
 Avg. Air Cons.: 4 cfm

### DATA

## PARTS LIST

Index	Part #	Description	Q'ty	Index	Part #	Description	Q'ty
1	ZRD325-01	AIR INLET	1	20	ZRD325-20	BEARING	1
2	ZRD325-02	EXHAUST SLEEVE	1	21	ZRD325-21	WASHER	1
3	ZRD325-03	PIN	1	22	ZRD325-22	GEAR LINK	1
4	ZRD325-04	HOUSING	1	23	ZRD325-23	GEAR	6
5	ZRD325-05	SPRING	1	24	ZRD325-24	PIN	6
6	ZRD325-06	O-RING	1	25	ZRD325-25	GEAR PLATE	2
7	ZRD325-07	VALVE STEM	1	26	ZRD325-26	GEAR SHAFT	1
8	ZRD325-08	O-RING	1	27	ZRD325-27	SHAFT	1
9	ZRD325-09	REVERSE LEVER	1	28	ZRD325-28	BEARING	2
10	ZRD325-10	TRIGGER	1	29	ZRD325-29	CLAMP NUT	1
11	ZRD325-11	O-RING	1	30	ZRD325-30	WASHER	1
12	ZRD325-12	BEARING	1	31	ZRD325-31	1/2" KEYLESS	1
13	ZRD325-13	REAR PLATE	1	32	ZRD325-32	CHUCK SCREW	1
14	ZRD325-14	PIN	2	33	ZRD325-33	BUSHING	1
15	ZRD325-15	CYLINDER	1	34	ZRD325-34	O-RING	1
16	ZRD325-16	ROTOR	1	35	ZRD325-35	HANDLE LINK	1
17	ZRD325-17	ROTOR BLADE	4	36	ZRD325-36	HANDGRIP	1
18	ZRD325-18	GEAR LINK	1	37	ZRD325-37	MUFFLER	1
19	ZRD325-19	FRONT PLATE	1	38	ZRD325-38	PACKING	1