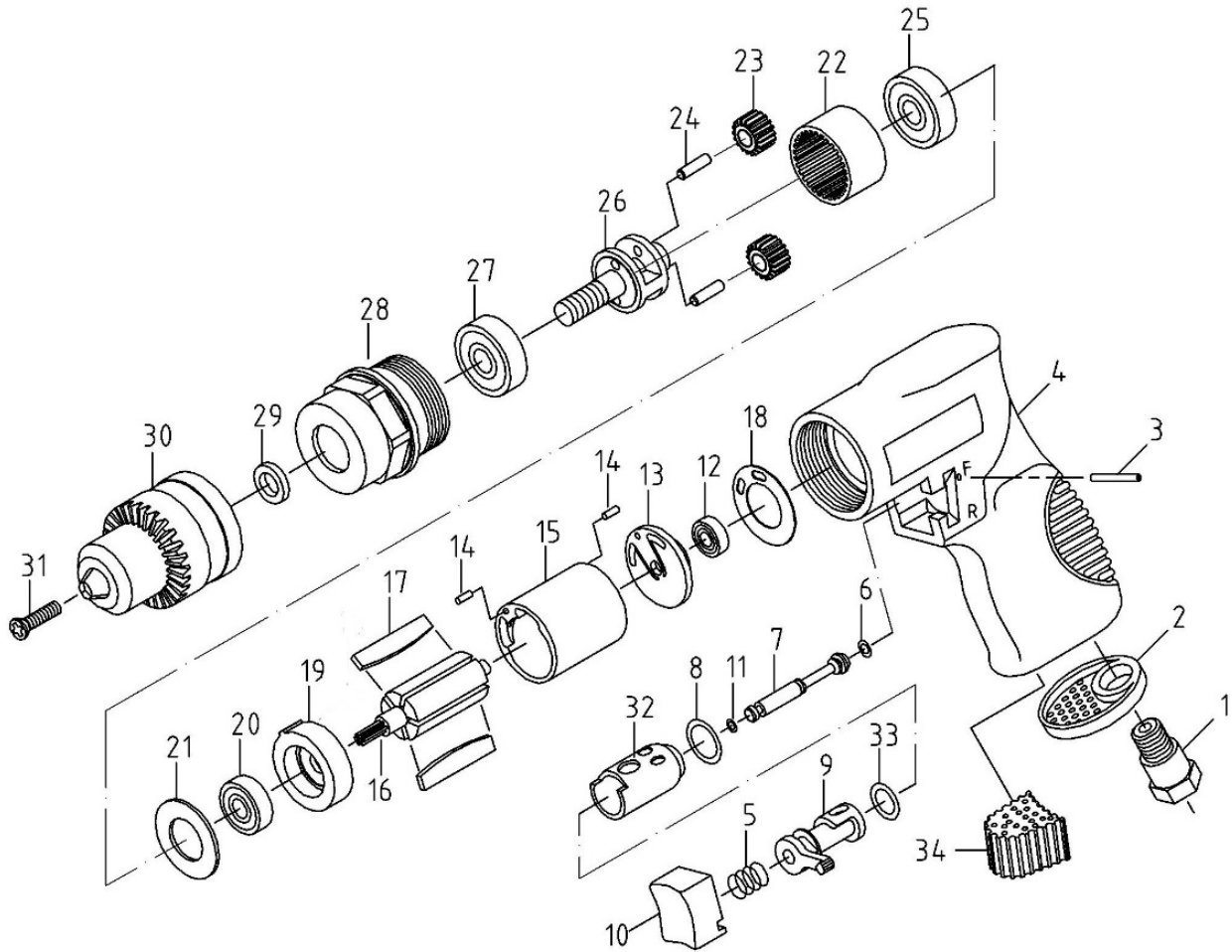


ZRD324P 3/8" Air Reversible Drill



ZRD324P 3/8" Air Reversible Drill

TECHNICAL

DATA

Chuck Size: 3/8(10) inch(mm)
 Spindle Thread: 3/8 " -24
 Net Weight: 2(0.9) lbs(kgs)
 Length: 7.6(195) in.(mm)

Free Speed: 1800 rpm
 Air Inlet Size: 1/4 inch-NPT/PT
 Min. Hose Size: 3/8(10) inch(mm)
 Avg. Air Cons.: 4 cfm

PARTS LIST

Index	Part #	Description	Q'ty	Index	Part #	Description	Q'ty
1	ZRD324P-01	AIR INLET	1	18	ZRD324P-18	PACKING	1
2	ZRD324P-02	EXHAUST SLEEVE	1	19	ZRD324P-19	FRONT PLATE	1
3	ZRD324P-03	PIN	1	20	ZRD324P-20	BEARING	1
4	ZRD324P-04	HOUSING	1	21	ZRD324P-21	WASHER	1
5	ZRD324P-05	SPRING	1	22	ZRD324P-22	GEAR LINK	1
6	ZRD324P-06	O-RING	1	23	ZRD324P-23	GEAR	2
7	ZRD324P-07	VALVE STEM	1	24	ZRD324P-24	PIN	2
8	ZRD324P-08	O-RING	1	25	ZRD324P-25	BEARING	1
9	ZRD324P-09	REVERSE LEVER	1	26	ZRD324P-26	GEAR PLATE	1
10	ZRD324P-10	TRIGGER	1	27	ZRD324P-27	BEARING	1
11	ZRD324P-11	O-RING	1	28	ZRD324P-28	CLAMP NUT	1
12	ZRD324P-12	BEARING	1	29	ZRD324P-29	WASHER	1
13	ZRD324P-13	REAR PLATE	1	30	ZRD324P-30	3/8" CHUCK	1
14	ZRD324P-14	PIN	2	31	ZRD324P-31	CHUCK SCREW	1
15	ZRD324P-15	CYLINDER	1	32	ZRD324P-32	BUSHING	1
16	ZRD324P-16	ROTOR	1	33	ZRD324P-33	O-RING	1
17	ZRD324P-17	ROTOR BLADE	5	34	ZRD324P-34	MUFFLER	1