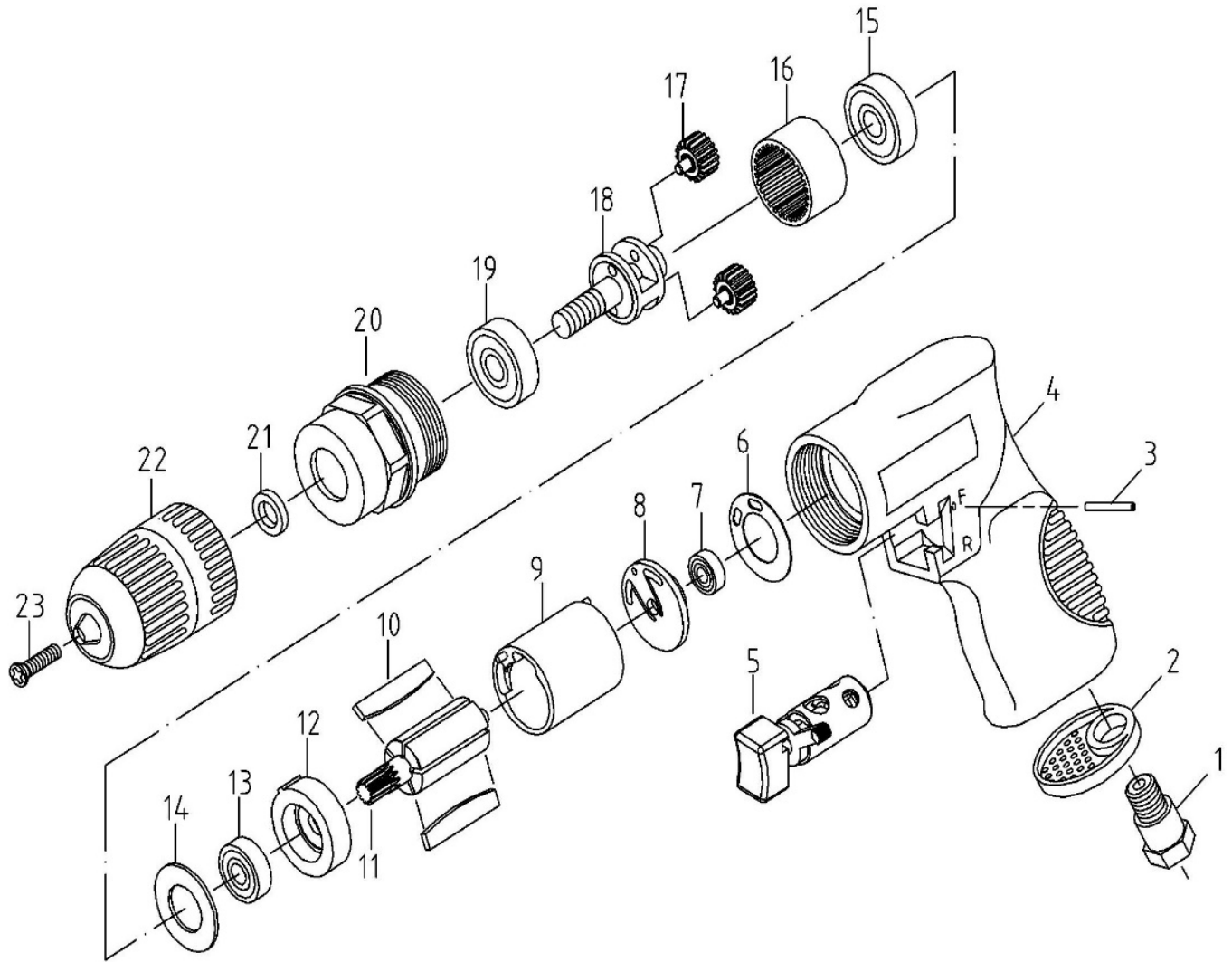


# ZRD324D 3/8" Air Reversible Drill (Feathering Control)



## ZRD324D 3/8" Air Reversible Drill (Feathering Control)

### TECHNICAL

### DATA

Chuck Size : 3/8(10) inch(mm)  
 Spindle Thread : 3/8 " -24  
 Net Weight : 2(0.9) lbs(kgs)  
 Length : 7.6(195) inch(mm)

Free Speed : 1800 rpm  
 Air Inlet Size : 1/4 inch-NPT/PT  
 Min. Hose Size : 3/8(10) inch(mm)  
 Avg. Air Cons. : 4 cfm

### PARTS LIST

Index	Part #	Description	Q'ty	Index	Part #	Description	Q'ty
1	ZRD324D-01	AIR INLET	1	13	ZRD324D-13	BEARING	1
2	ZRD324D-02	EXHAUST SLEEVE	1	14	ZRD324D-14	WASHER	1
3	ZRD324D-03	PIN	1	15	ZRD324D-15	BEARING	1
4	ZRD324D-04	HOUSING SET	1	16	ZRD324D-16	GEAR LINK	1
5	ZRD324D-05	REVERSE LEVER SET	1	17	ZRD324D-17	GEAR SET	2
6	ZRD324D-06	PACKING	1	18	ZRD324D-18	GEAR PLATE	1
7	ZRD324D-07	BEARING	1	19	ZRD324D-19	BEARING	1
8	ZRD324D-08	REAR PLATE	1	20	ZRD324D-20	CLAMP NUT	1
9	ZRD324D-09	CYLINDER SET	1	21	ZRD324D-21	WASHER	1
10	ZRD324D-10	ROTOR BLADE	5	22	ZRD324D-22	3/8" KEYLESS CHUCK	1
11	ZRD324D-11	ROTOR	1	23	ZRD324D-23	CHUCK SCREW	1
12	ZRD324D-12	FRONT PLATE	1				