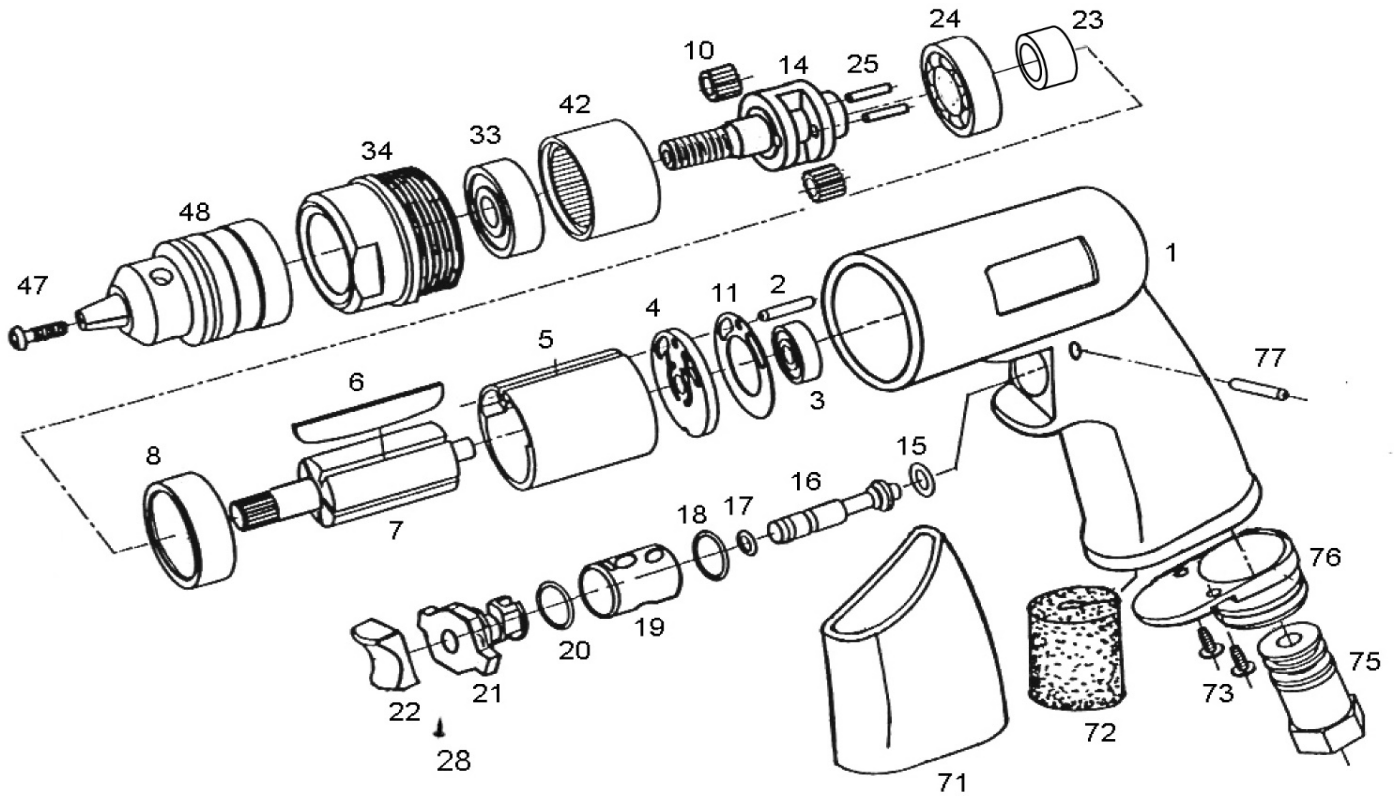


ZRD1600 3/8" Industrial Air Reversible Drill



ZRD1600 3/8" Industrial Air Reversible Drill

TECHNICAL DATA

Capacity: 3/8(10) inch(mm)
 Spindle Size: 3/8 " -24
 Free Speed: 1600rpm
 Avg. Air Cons: 5(141) cfm(l/min)

Net Weight: 2.5(1.1) lbs(kgs)
 Overall Length: 185 mm
 Air Inlet Size: 1/4 inch-NPT/PT
 Min. Hose Size: 3/8(10) inch(mm)

PARTS LIST

Index	Part #	Description	Q'ty	Index	Part #	Description	Q'ty
1	ZRD1600-01	Motor Housing	1	22	ZRD1600-22	Trigger	1
2	ZRD1600-02	Pin	1	23	ZRD1600-23	Needle Bearing	1
3	ZRD1600-03	Ball Bearing	1	24	ZRD1600-24	Ball Bearing	1
4	ZRD1600-04	Rear Plate	1	25	ZRD1600-25	Planet Pin	2
5	ZRD1600-05	Cylinder	1	28	ZRD1600-28	Screw	1
6	ZRD1600-06	Rotor Blade	6	33	ZRD1600-33	Ball Bearing	1
7	ZRD1600-07	Rotor	1	34	ZRD1600-34	Clamp Nut	1
8	ZRD1600-08	Front Plate	1	42	ZRD1600-42	Internal Gear	1
10	ZRD1600-10	Planet Gear	3	47	ZRD1600-47	Chuck Screw	1
11	ZRD1600-11	Motor Gasket	1	71	ZRD1600-71	Rubber Sleeve	1
14	ZRD1600-14	Planet Cage	1	72	ZRD1600-72	Muffler	1
15	ZRD1600-15	O-Ring	1	73	ZRD1600-73	Screw	2
16	ZRD1600-16	Valve Stem	1	75	ZRD1600-75	Air Inlet Bushing	1
17	ZRD1600-17	O-Ring	1	76	ZRD1600-76	Diffuser Exhaust	1
18	ZRD1600-18	O-Ring	1	77	ZRD1600-77	Pin	1
19	ZRD1600-19	Reverse Bushing	1				
20	ZRD1600-20	O-Ring	1				
21	ZRD1600-21	Throttle Bushing	1	48	ZRD1600-48	3/8" Drill Chuck w/key	1