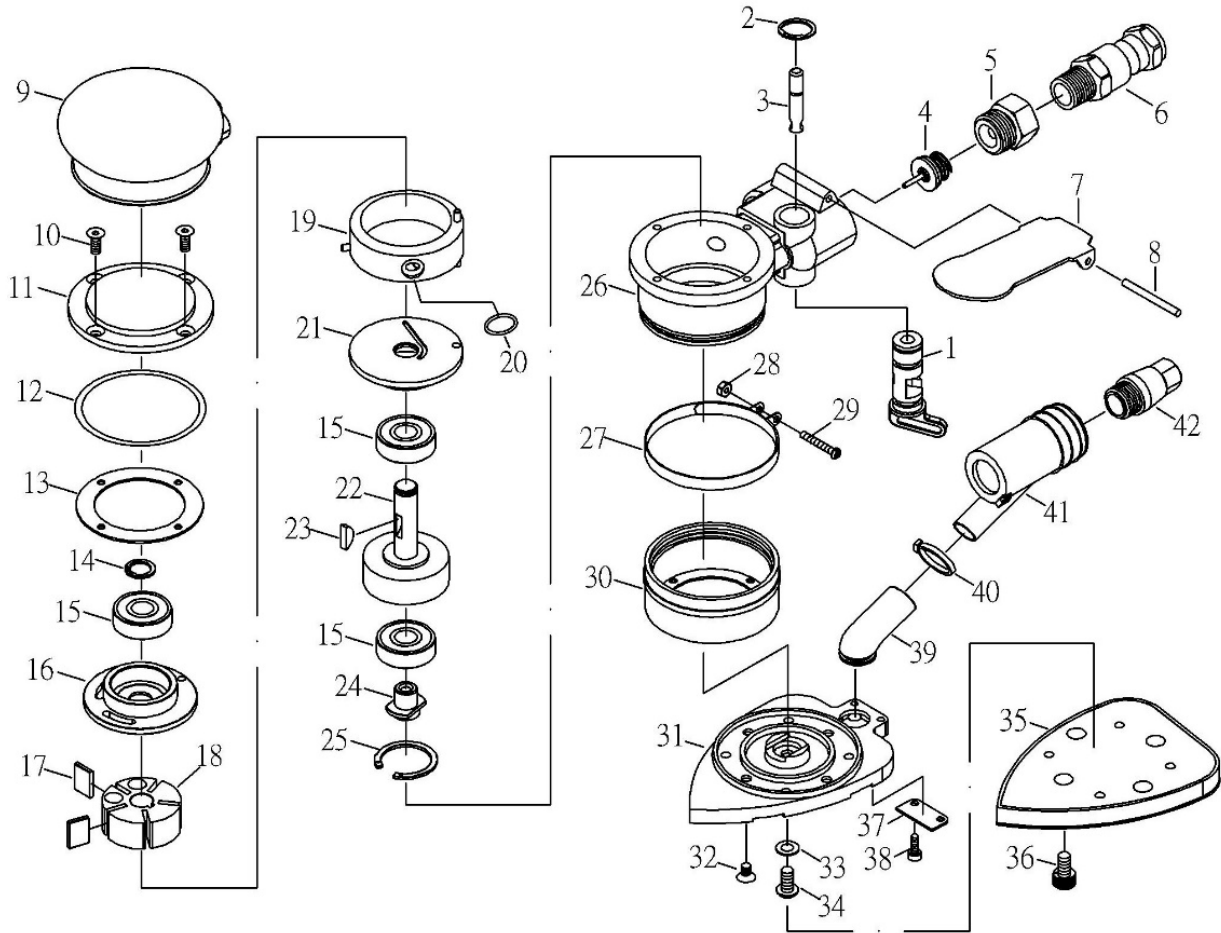


ZP338C Central Vacuum Delta Sanders



ZP338C Central Vacuum Delta Sanders

TECHNICAL DATA

Net Weight: 1.5(0.7) lbs(kg)
 Dia. Orbit: 1/8(3.2) inch(mm)
 Noise Level: 80 dBA
 Vibration: 0.8 m/s²

RPM: 10000
 Air Inlet: 1/4 inch
 Min.Hose Size: 3/8(10) inch(mm)
 Avg. Air Cons.: 1.6 cfm

PARTS LIST

Index	Part #	Description	Q'ty	Index	Part #	Description	Q'ty
1	ZP338C-01	REGULATOR SET	1	22	ZP338C-22	MOTOR SHAFT BALANCER	1
2	ZP338C-02	SNAP RING	1	23	ZP338C-23	KEY	1
3	ZP338C-03	VALVE STEM SET	1	24	ZP338C-24	SHAFT	1
4	ZP338C-04	VALVE SET	1	25	ZP338C-25	SNAP RING	1
5	ZP338C-05	AIR INLET	1	26	ZP338C-26	HOUSING	1
6	ZP338C-06	SWIVEL QUICK COUPLER	1	27	ZP338C-27	SKIRT BAND	1
7	ZP338C-07	LEVER	1	28	ZP338C-28	NUT	1
8	ZP338C-08	PIN	1	29	ZP338C-29	SCREW	1
9	ZP338C-09	PROTECTING RUBBER	1	30	ZP338C-30	SKIRT	1
10	ZP338C-10	SCREW	4	31	ZP338C-31	PAD SEAT	1
11	ZP338C-11	TOP COVER	1	32	ZP338C-32	SCREW	4
12	ZP338C-12	O-RING	1	33	ZP338C-33	WASHER	1
13	ZP338C-13	PACKING	1	34	ZP338C-34	SCREW	1
14	ZP338C-14	SNAP RING	1	35	ZP338C-35	PAD HOOK-UP	1
15	ZP338C-15	BEARING	3	36	ZP338C-36	SCREW	4
16	ZP338C-16	REAR PLATE	1	37	ZP338C-37	COVER	1
17	ZP338C-17	ROTOR BLADE	5	38	ZP338C-38	SCREW	2
18	ZP338C-18	ROTOR	1	39	ZP338C-39	DUST HOSE	1
19	ZP338C-19	CYLINDER SET	1	40	ZP338C-40	SKIRT BAND	1
20	ZP338C-20	O-RING	1	41	ZP338C-41	VACUUM ADAPTER	1
21	ZP338C-21	FRONT PLATE	1	42	ZP338C-42	MUFFLER BODY	1