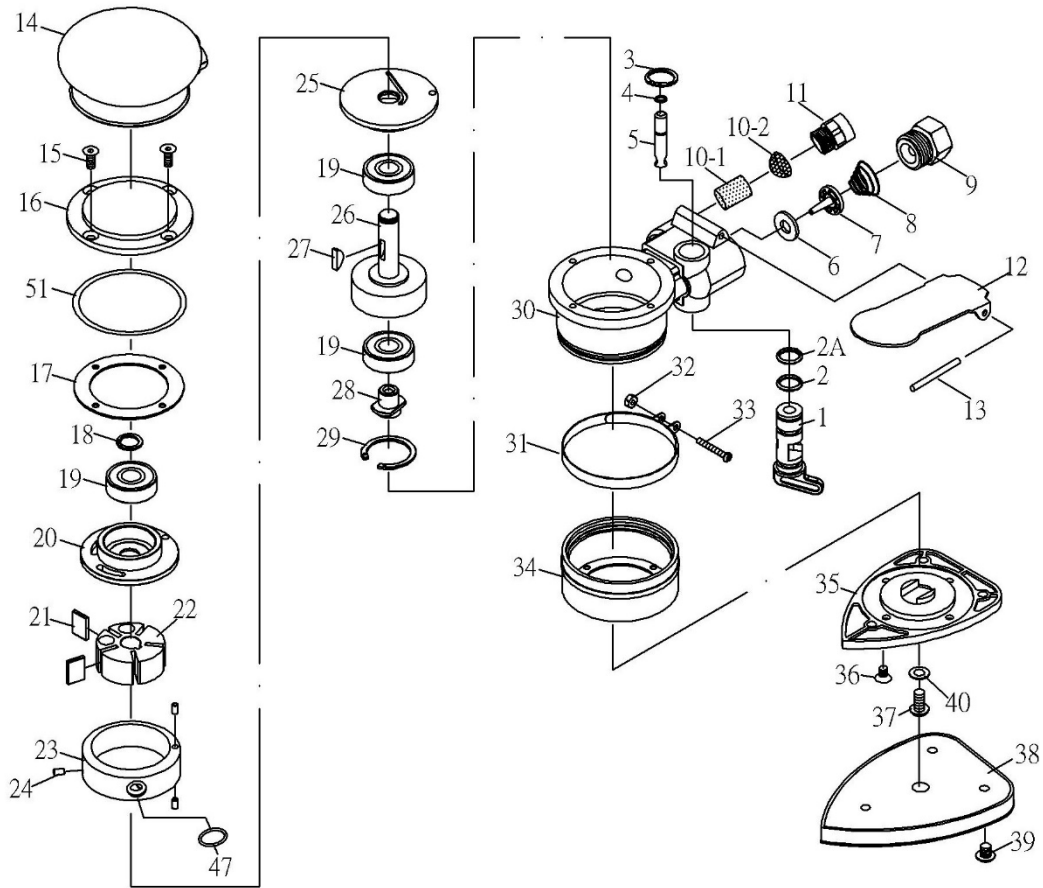


ZP338 Air Delta Sanders (Non-Vacuum)



ZP338 Air Delta Sanders (Non-Vacuum)

TECHNICAL

Net Weight : 1.5(0.7) lbs(kgs)

RPM : 10000

DATA

Diameter Orbit : 3.2

Air Inlet Size : 1/4 inch-NPT/PT

Noise Level : 80 dBA

Min. Hose Size : 3/8(10) inch(mm)

Vibration : 0.8 m/s²

Avg. Air Cons. : 0.6 cfm

PARTS LIST

Index	Part #	Description	Q'ty	Index	Part #	Description	Q'ty
1	ZP338-01	REGULATOR	1	21	ZP338-21	ROTOR BLADE	5
2	ZP338-02	O-RING (P10)	1	22	ZP338-22	ROTOR	1
2A	ZP338-02A	O-RING (S10)	1	23	ZP338-23	CYLINDER	1
3	ZP338-03	SNAP RING	1	24	ZP338-24	PIN (3*5)	3
4	ZP338-04	O-RING	1	25	ZP338-25	FRONT PLATE	1
5	ZP338-05	VALVE STEM	1	26	ZP338-26	MOTOR SHAFT BALANCER	1
6	ZP338-06	WASHER	1	27	ZP338-27	ROTOR KEY	1
7	ZP338-07	VALVE	1	28	ZP338-28	SHAFT	1
8	ZP338-08	SPRING	1	29	ZP338-29	SNAP RING	1
9	ZP338-09	AIR INLET	1	30	ZP338-30	HOUSING	1
10-1	ZP338-10-1	SILENCER	1	31	ZP338-31	SKIRT BAND	1
10-2	ZP338-10-2	STAINLESS MESH	1	32	ZP338-32	NUT	1
11	ZP338-11	EXHAUST SLEEVE	1	33	ZP338-33	SCREW(M3*20)	1
12	ZP338-12	LEVER	1	34	ZP338-34	SKIRT	1
13	ZP338-13	PIN(3*36L)	1	35	ZP338-35	PAD SEAT	1
14	ZP338-14	PROTECTING RUBBER	1	36	ZP338-36	SCREW(M4*6)	4
15	ZP338-15	SCREW	4	37	ZP338-37	SCREW(M5*12)	1
16	ZP338-16	TOP COVER	1	38	ZP338-38	PAD HOOK-UP	1
17	ZP338-17	PACKING	1	39	ZP338-39	SCREW(M5*6)	3
18	ZP338-18	SNAP RING	1	40	ZP338-40	WASHER	1
19	ZP338-19	BEARING	3	47	ZP338-47	O-RING	1
20	ZP338-20	REAR PLATE	1	51	ZP338-51	O-RING	1