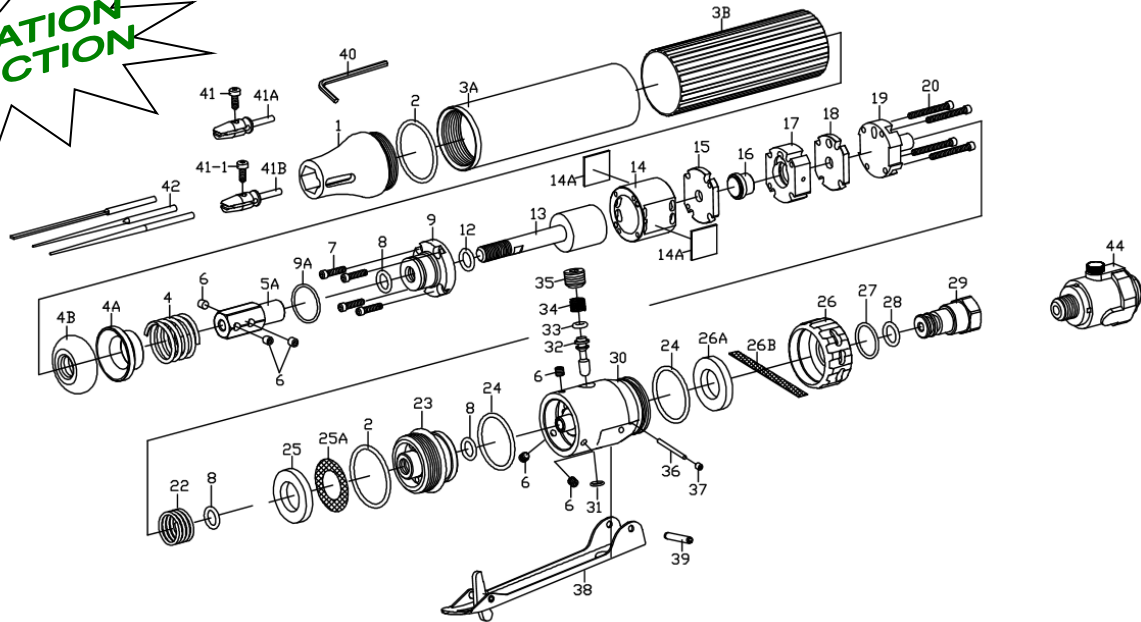


ZF-1MTE Super Fine Air Lapper

**VIBRATION
REDUCTION**



ZF-1MTE Super Fine Air Lapper

TECHNICAL DATA	Operating Air Pressure bar(psi)	: 6.2 (90)
	Strokes Per Minute @90psi B.P.M.	: 21,000
	Stroke Length mm	: 1
	Avg. Air Consumption cfm(l/min)	: 4 (120)
	Air Inlet Size inch-NPT/PT	: 1/4
	Min. Hose Size inch	: 3/8
	Net Weight kgs(lbs)	: 0.33 (0.73)
	Sound Pressure dBA	: 72
	Vibration m/s ²	: 0.8
	Standard Accessories Include	: 1 pc of 2.5mm Hex Wrench : 1 pc each of 1mm ^t & 3mm ^t Stone Holder & 5mm File Holder : 1 pc each of φ 3mm Diamond Files in 2mm, 4mm & 6mm width.

PARTS LIST

Index	Part #	Description	Index	Part#	Description
1.	210M102	Front Head	25A.	210M706	Filter
2.	OR2225	O-Ring (2)	26.	311M105	Exhaust Deflector
3A.	210M101	Body	*26A	210M705	Muffler
3B.	210M118T	Rubber Sleeve	26B	210M716	Filter
4.	311M607	Spring	27.	OR1619	O-Ring
4A.	210M109	Spring Holder	*28.	OR0913	O-Ring
4B.	193426	Bumper	29.	311M702	Air Inlet Nipple
5A.	210M905	5mm File Holder	30.	210M107	Admission Valve Main Body
6.	HS00508005	Set Screw (6)	31.	OR0507	O-Ring
*7.	HC00305012E	Front Dowel Pin (4)	32.	311M602	Valve Stem
*8.	OR0812	O-Ring (3)	33.	OR0307	O-Ring
9.	210M403	Cylinder Head Ass'y	34.	318603	Spring
9A.	OR1518	O-Ring	35.	HS01802808	Screw
*12.	OR0611	O-Ring	36.	PR2012	Front Dowel Pin
13.	201M402	Piston Ass'y	37.	HS00305003	Set Screw
14.	201M401	Cylinder	38.	316611	Safety Lever Ass'y
*14A.	210M715	Muffler	39.	SP3020	Spring Pin
15.	205M404	Cylinder End Plate	40.	201925	2.5mm Hex Wrench
16.	314302	Automatic Valve	41.	HC00305008	Screw (1)
17.	311M301	Valve Chest	41A.	205M901	1mm Stone Holder
18.	311M303	Valve Seat	41-1	HC00305010	Screw
19.	210M304	Valve Case	41B.	205M903	3mm Stone Holder
*20.	HC00305024E	Rear Dowel Pin (4)	42.	201952	2mm Rectangular Diamond File
22.	315608	Spring		201954	4mm Rectangular Diamond File
23.	201M104	Air Inlet		201956	6mm Rectangular Diamond File
24.	OR2630	O-Ring (2)	44.	CA-1025B	1/4" Mini Oiler
*25.	210M725	Muffler			