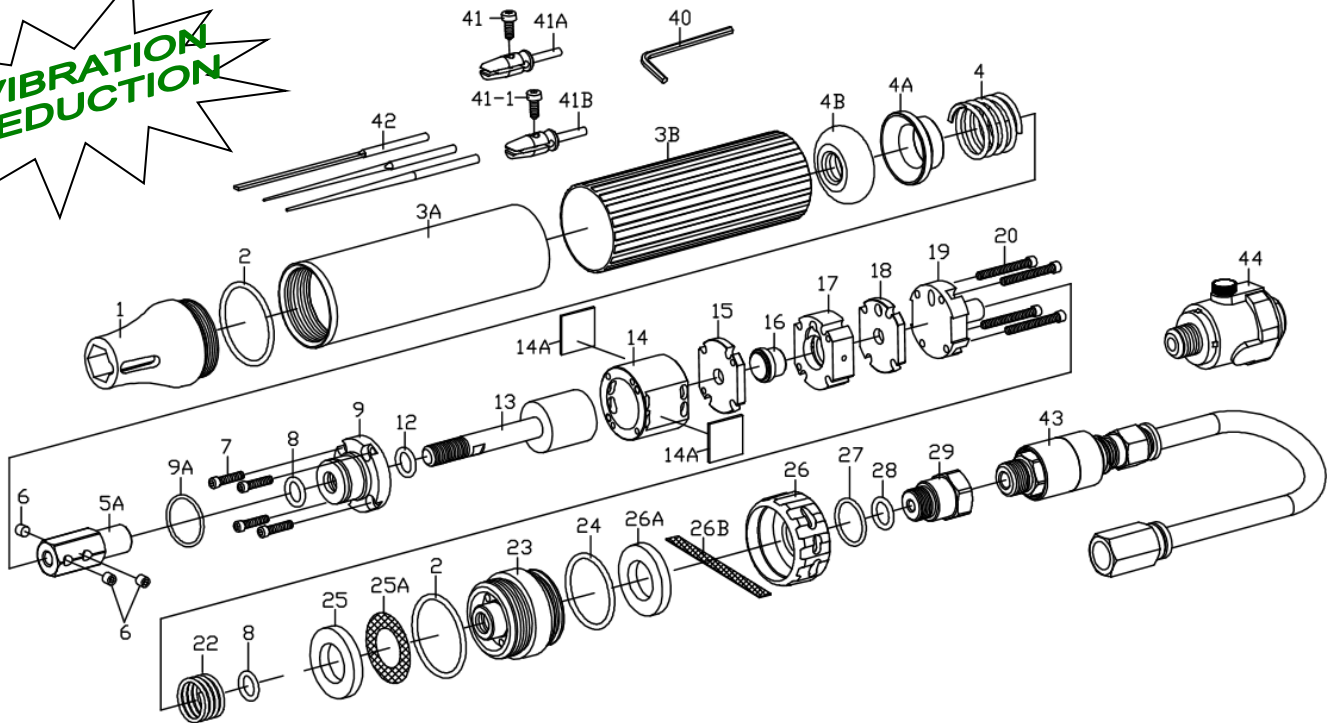


ZF-1ME Super Fine Air Lapper



ZF-1ME Super Fine Air Lapper

TECHNICAL DATA	Operating Air Pressure bar (psi)	: 6.2 (90)
	Strokes Per Minute @90psi B.P.M.	: 21,000
	Stroke Length mm	: 1
	Avg. Air Consumption cfm(l/min)	: 4 (120)
	Air Inlet Size inch-NPT/PT	: 1/4
	Min. Hose Size inch	: 3/8
	Net Weight kgs(lbs)	: 0.33 (0.73)
	Sound Pressure dBA	: 72
	Vibration m/s ²	: 0.8
	Standard Accessories Include	: 1 pc of 2.5mm Hex Wrench
		: 1 pc each of 1mm [†] & 3mm [†] Stone Holder & 5mm File Holder
		: 1 pc each of \varnothing 3mm Diamond Files in 2mm, 4mm & 6mm width.

PARTS LIST

Index	Part #	Description	Index	Part#	Description
1.	210M102	Front Head	*20.	HC00305024E	Rear Dowel Pin (4)
2.	OR2225	O-Ring (2)	22.	315608	Spring
3A.	210M101	Body	23.	201M103	Air Inlet
3B.	210M118	Rubber Sleeve	24.	OR2630	O-Ring
4.	311M607	Spring	*25.	210M725	Muffler
4A.	210M109	Spring Holder	25A.	210M706	Filter
4B.	193426	Bumper	26.	311M105	Exhaust Deflector
5A.	210M905	5mm File Holder	*26A	210M705	Muffler
6.	HS00508005	Set Screw (3)	26B	210M716	Filter
*7.	HC00305012E	Front Dowel Pin (4)	27.	OR1619	O-Ring
*8.	OR0812	O-Ring (2)	*28.	OR0912	O-Ring
9.	210M403	Cylinder Head Ass'y	29.	210M702	Air Inlet
9A.	OR1518	O-Ring	40.	201925	2.5mm Hex Wrench
*12.	OR0611	O-Ring	41.	HC00305008	Screw
13.	201M402	Piston Ass'y	41A.	205M901	1mm Stone Holder
14.	201M401	Cylinder	41-1	HC00305010	Screw
*14A.	210M715	Muffler	41B.	205M903	3mm Stone Holder
15.	205M404	Cylinder End Plate	42.	201952	2mm Rectangular Diamond File
16.	314302	Automatic Valve		201954	4mm Rectangular Diamond File
17.	311M301	Valve Chest		201956	6mm Rectangular Diamond File
18.	311M303	Valve Seat	43.	821A19	Roll Switch + Hose
19.	210M304	Valve Case	44.	CA-1025B	1/4" Mini Oiler