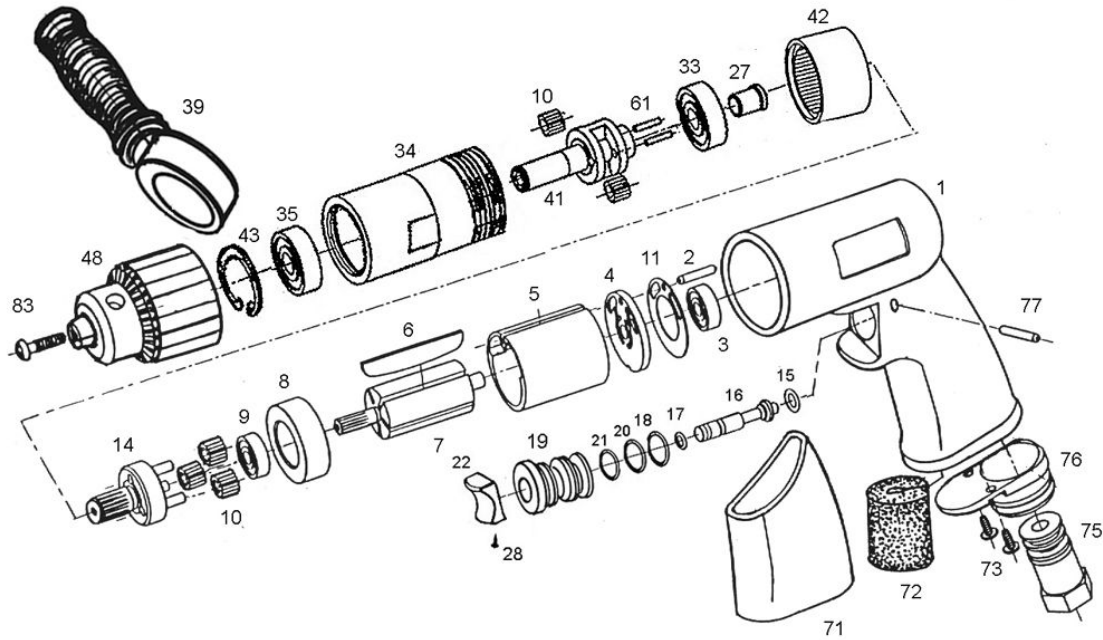


ZD900 1/2" INDUSTRIAL AIR DRILL



ZD900 1/2" INDUSTRIAL AIR DRILL

TECHNICAL DATA	Motor HP	0.8
	Chuck Size.....	1/2"
	Spindle Thread.....	1/2"-20
	Max. Free Speed	900 RPM
	Weightwith Chuck	3.8LBS
	Length	230 mm 9"
	Air Inlet	1/4"
	Hose Size(I.D)	3/8"
	Air Press. (PSI).....	90
	Avg. Air Consumption.....	5CFM
	Sound Pressure....	85 dBA
	Vibration....	<2.5M/S ²

PARTS LIST

Index #	Part #	Description	Index #	Part #	Description
1	ZD900-01	Motor Housing	27	ZD900-27	Bushing
2	ZD900-02	Pin	28	ZD900-28	Screw
3	ZD900-03	Ball Bearing	33	ZD900-33	Ball Bearing
4	ZD900-04	Rear Plate	34	ZD900-34	Clamp Housing
5	ZD900-05	Cylinder	35	ZD900-35	Ball Bearing
6	ZD900-06	Rotor Blade (5)	41	ZD900-41	Working Spindle
7	ZD900-07	Rotor (14T)	42	ZD900-42	Internal Gear (43T)
8	ZD900-08	Front Plate	43	ZD900-43	Retainer Ring
9	ZD900-09	Ball Bearing	61	ZD900-61	Planet Pin (2)
10	ZD900-10	Planet Gear (14T) (5)	71	ZD900-71	Rubber Sleeve
11	ZD900-11	Motor Gasket	72	ZD900-72	Muffer
14	ZD900-14	Rear Cage (15T)	73	ZD900-73	Screw (2)
15	ZD900-15	O-Ring (3.8X19)	75	ZD900-75	Air Inlet Bushing
16	ZD900-16	Valve Stem	76	ZD900-76	Diffuser Exhaust
17	ZD900-17	O-Ring (3x1.5)	77	ZD900-77	Pin
18	ZD900-18	O-Ring	83	ZD900-83	Chuck Screw
19	ZD900-19	Reverse Bushing			
20	ZD900-20	O-Ring	39	ZD900-39	Handle Ass'y
21	ZD900-21	O-Ring			
22	ZD900-22	Trigger	48	ZD900-48	1/2"Drill Chuck (1/2" -20) (opt.)