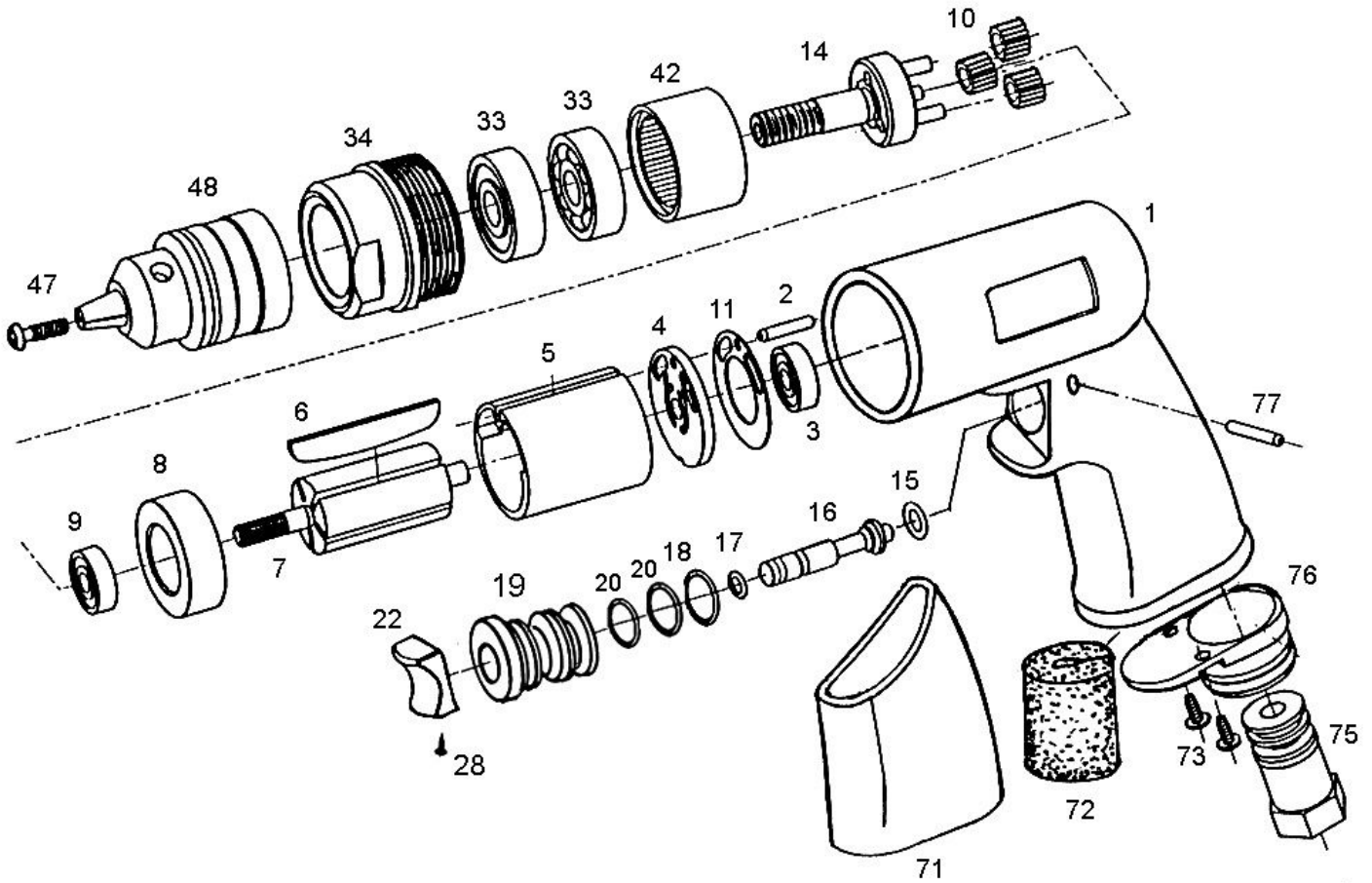


# ZD3600 3/8" Industrial Air Drill



## ZD3600 3/8" Industrial Air Drill

### TECHNICAL

Capacity: 3/8(10) inch(mm)  
 Spindle Size: 3/8"-24  
 Free Speed: 3500 rpm  
 Avg. Air Cons: 5(141) cfm(l/min)

Net Weight: 2.5(1.1) lbs(kgs)  
 Overall Length: 185 mm  
 Air Inlet Size: 1/4 inch-NPT/PT  
 Min. Hose Size: 3/8(10) inch(mm)

### DATA

### PARTS LIST

Index	Part #	Description	Q'ty	Index	Part #	Description	Q'ty
1	ZD3600-01	Motor Housing	1	22	ZD3600-22	Trigger	1
2	ZD3600-02	Pin	1	28	ZD3600-28	Screw	1
3	ZD3600-03	Ball Bearing	1	33	ZD3600-33	Ball Bearing	2
4	ZD3600-04	Rear Plate	1	34	ZD3600-34	Clamp Nut	1
5	ZD3600-05	Cylinder	1	42	ZD3600-42	Internal Gear	1
6	ZD3600-06	Rotor Blade	5	47	ZD3600-47	Chuck Screw	1
7	ZD3600-07	Rotor	1	71	ZD3600-71	Rubber Sleeve	1
8	ZD3600-08	Front Plate	1	72	ZD3600-72	Muffler	1
9	ZD3600-09	Ball Bearing	1	73	ZD3600-73	Screw	2
10	ZD3600-10	Planet Gear	3	75	ZD3600-75	Air Inlet Bushing	1
11	ZD3600-11	Motor Gasket	1	76	ZD3600-76	Diffuser Exhaust	1
14	ZD3600-14	Planet Cage	1	77	ZD3600-77	Pin	1
15	ZD3600-15	O-Ring	1				
16	ZD3600-16	Valve Stem	1		Optional		
17	ZD3600-17	O-Ring	1		Accessories		
18	ZD3600-18	O-Ring	1	48	ZD3600-48J	3/8" Drill Chuck ( 3/8"-24)	1
19	ZD3600-19	Reverse Bushing	1	48	ZD3600-48A	3/8" Drill Chuck ( 3/8"-24)	1
20	ZD3600-20	O-Ring	2				