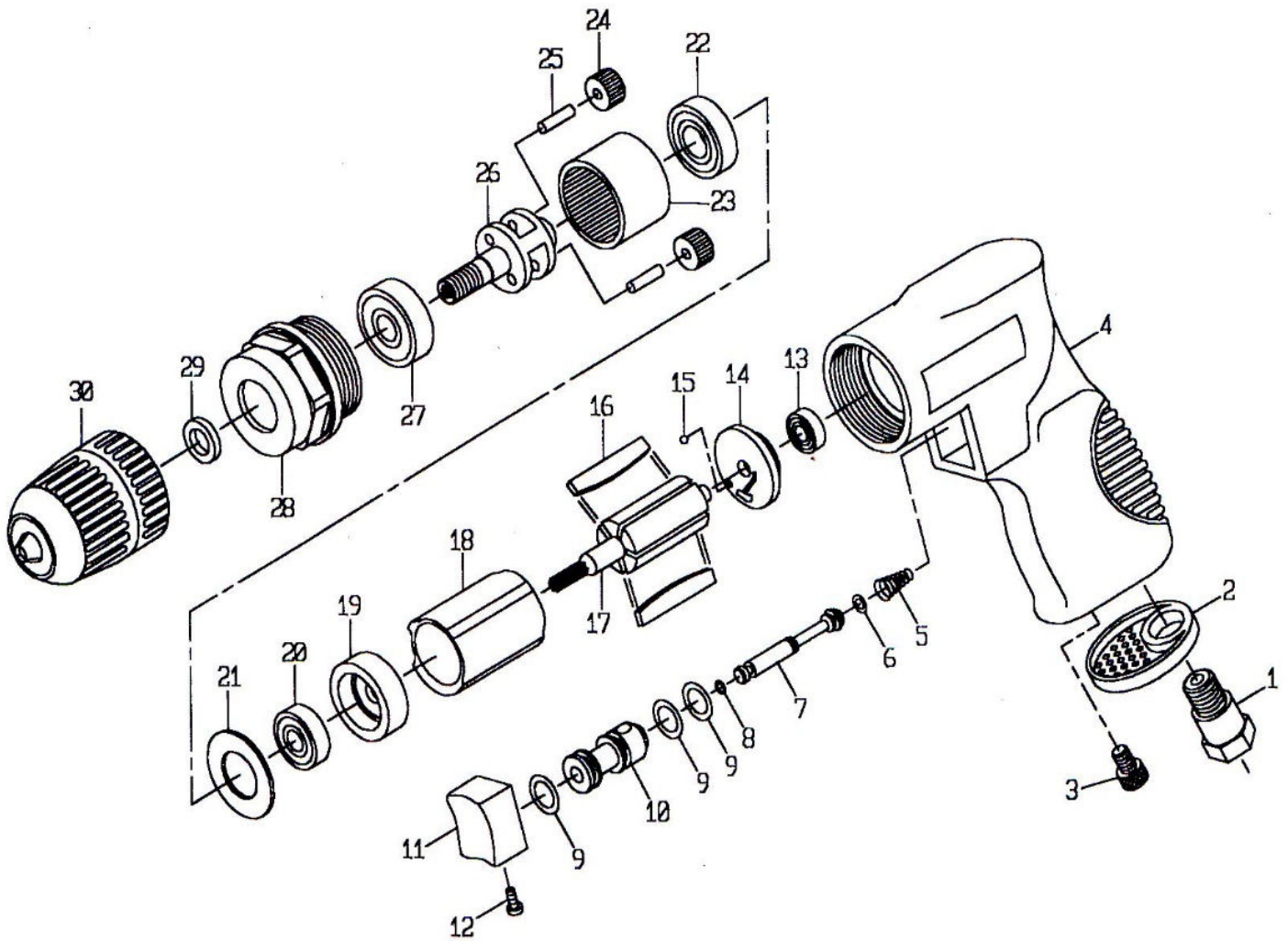


ZD322 3/8" Air Drill



ZD322 3/8" Air Drill

TECHNICAL DATA

Chuck Size: 3/8(10) inch(mm)
 Spindle Thread: 3/8 " -24
 Net Weight : 2(0.9) lbs(kgs)
 Length: 7.6(195) in.(mm)

Free Speed : 2,600 RPM
 Air Inlet Size : 1/4 inch-NPT/PT
 Min. Hose Size : 3/8(10) inch(mm)
 Avg. Air Cons. : 3.7 cfm

PARTS LIST

Index	Part #	Description	Q'ty	Index	Part #	Description	Q'ty
1	ZD322-01	AIR INLET	1	16	ZD322-16	ZD322-16	5
2	ZD322-02	EXHAUST SLEEVE	1	17	ZD322-17	ZD322-17	1
3	ZD322-03	SCREW	1	18	ZD322-18	ZD322-18	1
4	ZD322-04	HOUSING	1	19	ZD322-19	ZD322-19	1
5	ZD322-05	SPRING	1	20	ZD322-20	ZD322-20	1
6	ZD322-06	O-RING	1	21	ZD322-21	ZD322-21	1
7	ZD322-07	VALVE STEM	1	22	ZD322-22	ZD322-22	1
8	ZD322-08	O-RING	1	23	ZD322-23	ZD322-23	1
9	ZD322-09	O-RING	3	24	ZD322-24	ZD322-24	2
10	ZD322-10	VALVE BODY	1	25	ZD322-25	ZD322-25	2
11	ZD322-11	TRIGGER	1	26	ZD322-26	ZD322-26	1
12	ZD322-12	SCREW	1	27	ZD322-27	ZD322-27	1
13	ZD322-13	BEARING	1	28	ZD322-28	ZD322-28	1
14	ZD322-14	REAR PLATE	1	29	ZD322-29	ZD322-29	1
15	ZD322-15	PIN	1	30	ZD322-30	ZD322-30	1